

Atomy Rhodiola Milk Thistle



Atomy Rhodiola Milk Thistle

Keep your liver healthy with Atomy Rhodiola Milk Thistle

Milk thistle, a natural herb that has antioxidant and anti-inflammatory properties, is commonly used to detoxify the body, especially the liver.

Atomy Rhodiola Milk Thistle is a multi-formula dietary supplement for your healthy liver. It contains:

- Essential B vitamins to enhance your metabolism, energy, and Homocysteine balance in your blood.
- Rhodiola Rosea extract to help you recover from fatigue, and;
- Pantothenic acid for the metabolism of protein, carbohydrate, and fat.

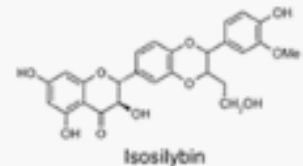
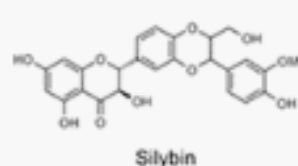
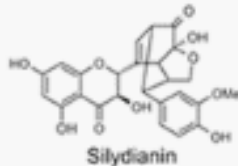
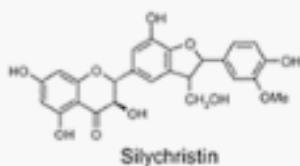
What is Milk Thistle?



Milk Thistle

is a thorny plant in Asteraceae, also known as *Silybum Marianum*(L.) Gaertn, or *Cardus Silybum*.

- The fruits and seeds of milk thistle are edible.
- The active ingredients in milk thistle is known as silymarin. Silymarin extracted from milk thistle is known to have antioxidant properties. Herbalists traditionally used milk thistle used to treat liver disorders.
- Milk thistle extract contains 320 ~ 660 mg/g of silymarin from the milk thistle plant.



* This information is not directly related to the product.

What is Milk Thistle?

Milk Thistle is a thorny plant in Asteraceae, also known as *Silybum Marianum*(L.) Gaertn, or *Cardus Silybum*.

Fruits and seeds of Milk Thistle are edible.

Product Name	Atomy Rhodiola Milk Thistle
Product Type	Dietary Supplement
Net Contents	2.54 OZ. (72 g) 120 tablets
Suggested Use	2 tablets daily
Caution	<ul style="list-style-type: none">- If you are pregnant, nursing, taking any medications or have any medical condition, consult your doctor before use.- Avoid this product if you are allergic to any of its ingredients.- Discontinue use and consult your doctor if any adverse reactions occur.- Do not consume after the expiration date.- Consume immediately after opening.
Storage	Store in a cool, dry place. Keep out of reach of children.

What is Rhodiola Rosea?



Rhodiola Rosea

is a perennial flowering plant that grows naturally in northern regions of Korea, such as Mountain Baekdu. It is from 5 to 40 cm tall, fleshy, and has several stems growing from a short, scaly rootstock. Flowers have 4 sepals and 4 petals, yellow to greenish yellow in color. After the flower withers, it bears 4 fruits in the size of 6~8mm.

Benefits : Help alleviate fatigue and symptoms associate with stress.

Recommended amount : 200~600 mg/g

* This information is not directly related to the product.

Milk Thistle Benefits

1. Liver Detoxification and Health.
2. May help protect against cancer.
3. May help lower high cholesterol.
4. May help control or prevent diabetes.

Atomy Shopping Mall

- **Free Membership**
- **No Registration fees**
- **No monthly quotas**
- **No website usage fees**
- **No monthly or annual fees**
- **No "Auto-Ship"**
- **No automatic ordering**
- **No purchase required to join Atomy shopping mall**

Please text us 715-418-1467 or email us: atomysav@gmail.com